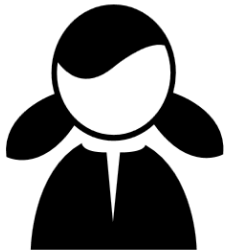


WHO ARE KETCHIKAN'S CTE STUDENTS?

2016-2017 DISTRICTWIDE AVERAGES



36%

Of CTE participants are female

27% Are economically disadvantaged

22% Are NTO*

13% Are disabled

4% Are ELL† or Migrant

* Nontraditional Occupations

† English Language Learners

DEMOGRAPHICS



♀ Caucasian— 50%;
 ♂ Alaska Native—25%;
 ♂ Asian—12%;
 ♂ Two or more races—4%;
 ♂ Hispanic—4%;
 ♂ American Indian—2.5%;
 ♂ Pacific Islander—2.5%;
 ♂ Black—0.5%

CTE IN KETCHIKAN



100% GRADUATION

CTE concentrators‡ are 23% more likely to graduate than their non-CTE counterparts.

‡ Students with ≥ 2.0 HS CTE credits



9.7%

Of KGBSD graduates are CTE concentrators



Of students took at least one CTE class in high school